



Dorchester Chambers 2 Yelverton Road
, Bournemouth, BH1 1DJ

£1,400 Per month

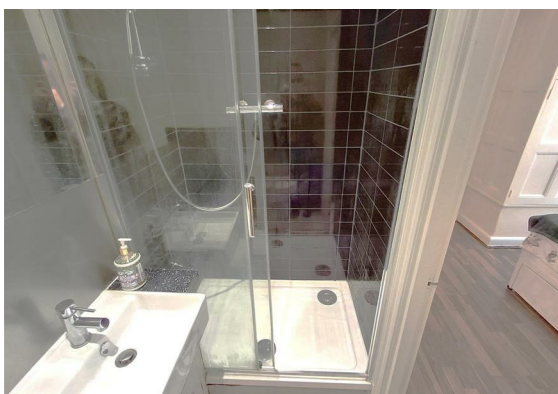
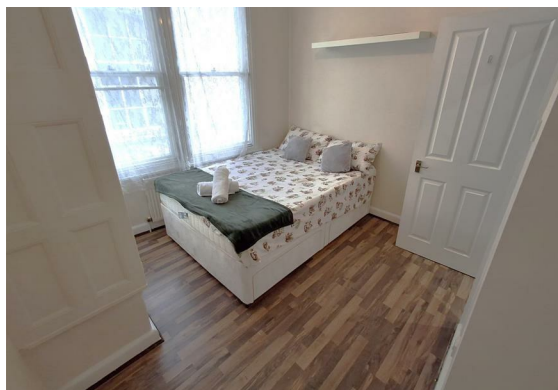


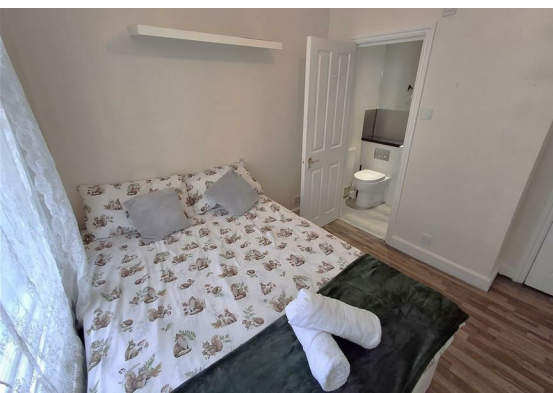
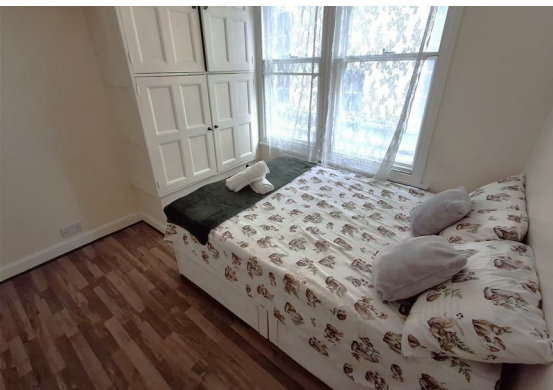
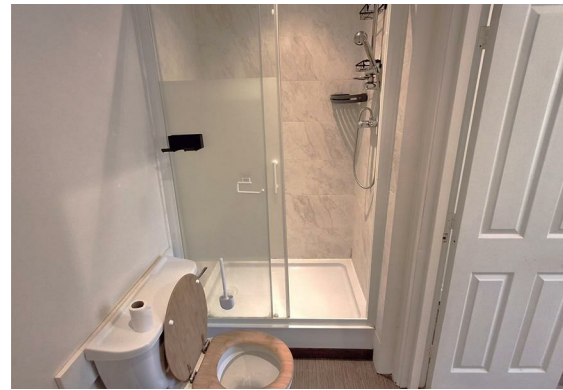
Dorchester Chambers 2

, Bournemouth, BH1 1DJ

Spacious Two bedroom flat to let in Bournemouth Town Centre close to all amenities. The flat comprises a good size two bedroom with private ensuites. Large lounge come dining and open arch to the kitchen separate area with fully equipped kitchen. Laminate flooring throughout. Single glaze sash windows. Gas central heating. No Car Parking.

Council Tax band- B
EPC - D





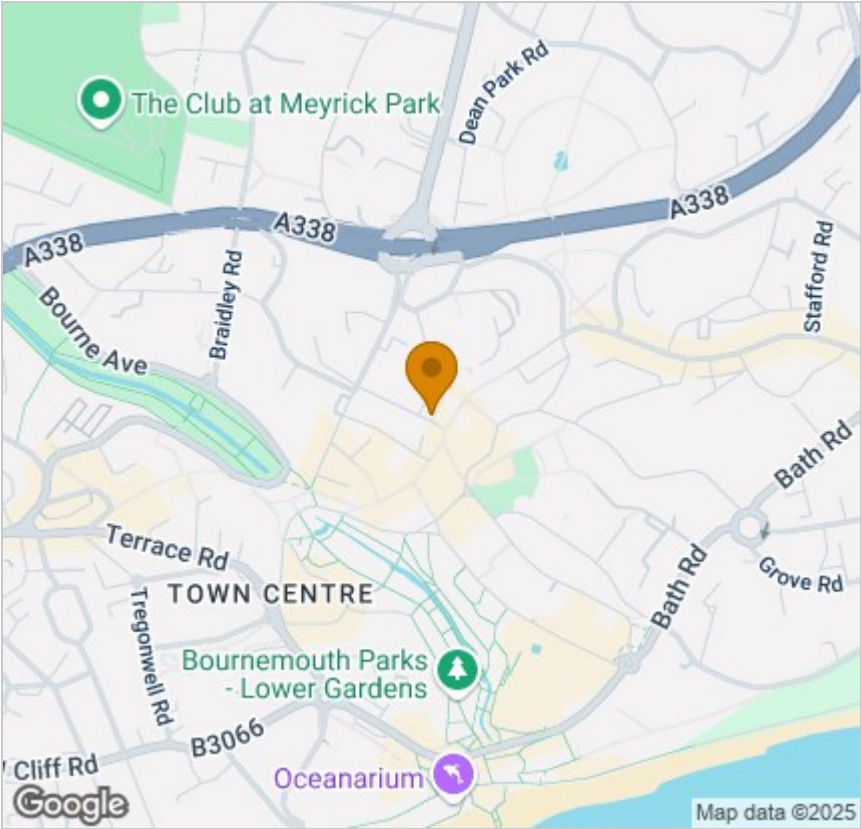
Floor Plan



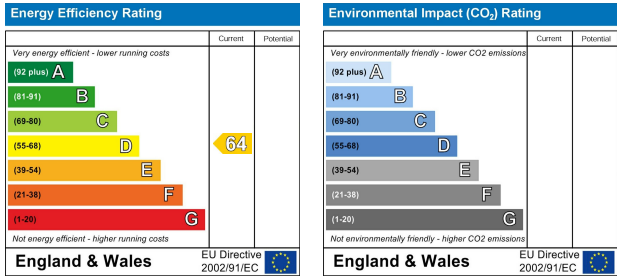
Viewing

Please contact our Fully Managed Properties Office on
if you wish to arrange a viewing appointment for this property or require further information.

Area Map



Energy Efficiency Graph



These particulars, whilst believed to be accurate are set out as a general outline only for guidance and do not constitute any part of an offer or contract. Intending purchasers should not rely on them as statements of representation of fact, but must satisfy themselves by inspection or otherwise as to their accuracy. No person in this firms employment has the authority to make or give any representation or warranty in respect of the property.