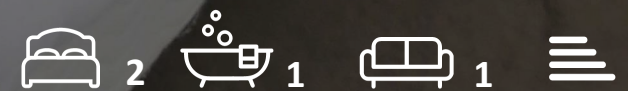


Flat 13 189 Old Christchurch Road
, Bournemouth, BH1 1JU

£1,495 Per month



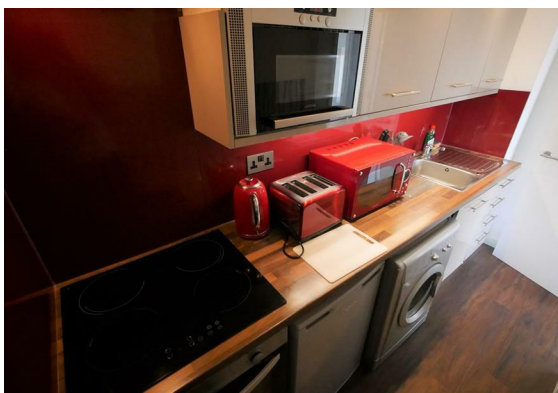
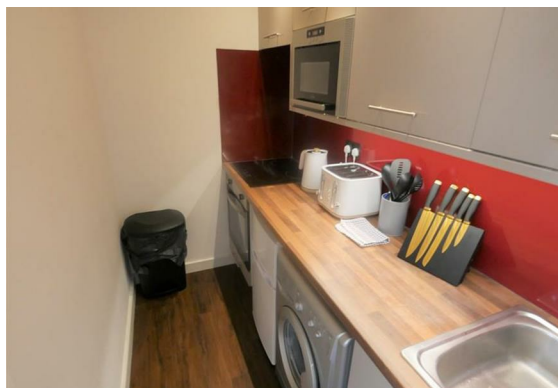
Flat 13 189 Old Christchurch

, Bournemouth, BH1 1JU

Magnificent Two bedroom flat to let in Bournemouth Town Centre - Student Let mainly but Professionals considered.

Key Features:

- Fully furnished
- Fully Fitted kitchen
- Modern furnishings, fittings, and furniture throughout
- Complimentary Wifi Access
- Car Park off-road (Subject to availability and payable permit)
- Council tax band - A
- EPC - D



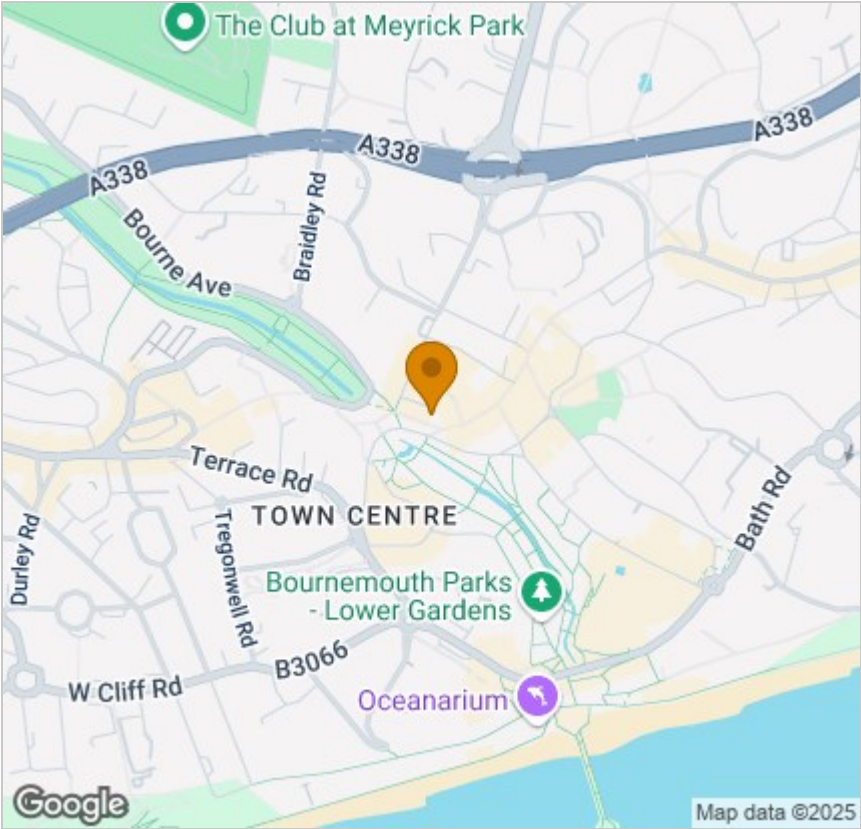
Floor Plan



Viewing

Please contact our Fully Managed Properties Office on
if you wish to arrange a viewing appointment for this property or require further information.

Area Map



Energy Efficiency Graph



These particulars, whilst believed to be accurate are set out as a general outline only for guidance and do not constitute any part of an offer or contract. Intending purchasers should not rely on them as statements of representation of fact, but must satisfy themselves by inspection or otherwise as to their accuracy. No person in this firms employment has the authority to make or give any representation or warranty in respect of the property.