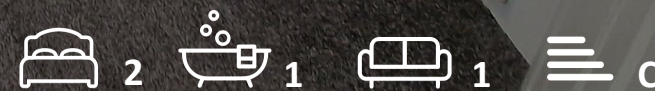




Flat 4, Treloen Court 58 Wellington Road
, Bournemouth, BH8 8JP

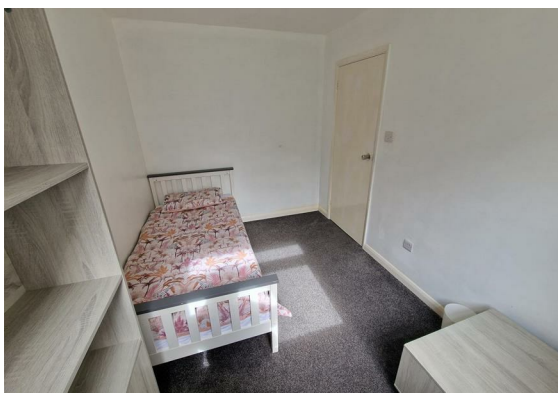
£1,450 Per month



Flat 4, Treloen Court 58

, Bournemouth, BH8 8JP

A well-positioned 2 bed proposed built flat in Charminster near Bournemouth Nuffield Hospital and Train Station. Surrounded by a garden area and with one allocated car park, this flat is fully furnished with bills excluded. Two double bedrooms, one full bathroom, and a separate kitchen and lounge.





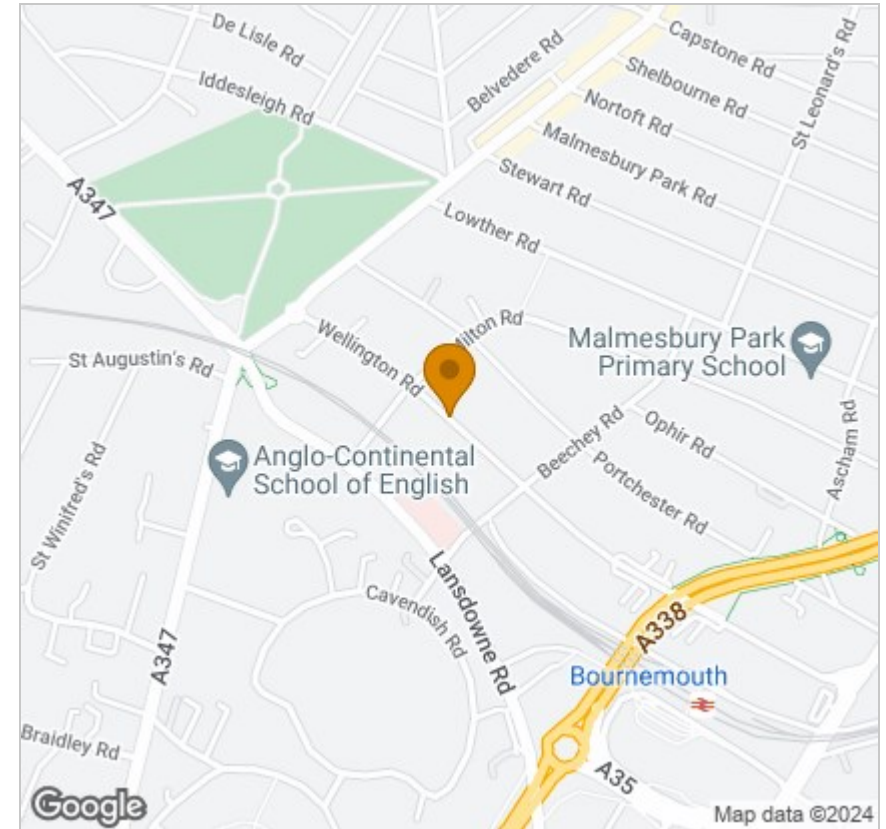
Floor Plan



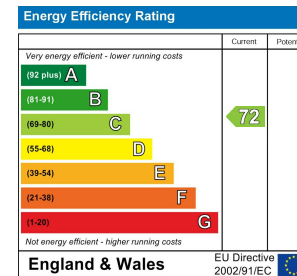
Viewing

Please contact our Leased Office on
if you wish to arrange a viewing appointment for this property or require further information.

Area Map



Energy Efficiency Graph



These particulars, whilst believed to be accurate are set out as a general outline only for guidance and do not constitute any part of an offer or contract. Intending purchasers should not rely on them as statements of representation of fact, but must satisfy themselves by inspection or otherwise as to their accuracy. No person in this firm's employment has the authority to make or give any representation or warranty in respect of the property.