



Flat 2 189 Old Christchurch Road
, Bournemouth, BH1 1JU

£1,050 Per month

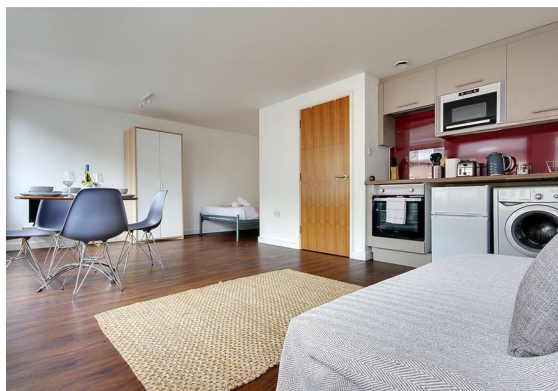
Flat 2 189 Old Christchurch

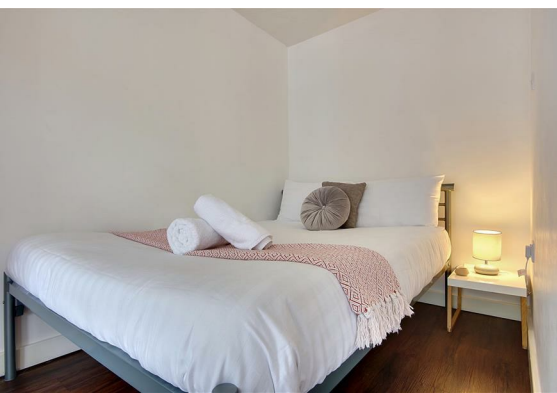
, Bournemouth, BH1 1JU

Luxurious large modern studio room
available to let to STUDENTS and
PROFESSIONAL

Main Features:

Fully Furnished
Complimentary Wifi Access
Fully kitted kitchenette
Access to private off-road parking
(Subject to separate agreement/permit)





Floor Plan



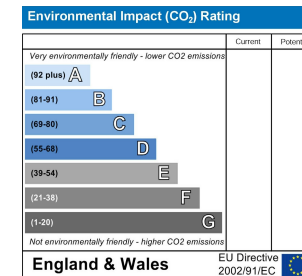
Viewing

Please contact our Fully Managed Properties Office on [phone number] if you wish to arrange a viewing appointment for this property or require further information.

Area Map



Energy Efficiency Graph



These particulars, whilst believed to be accurate are set out as a general outline only for guidance and do not constitute any part of an offer or contract. Intending purchasers should not rely on them as statements of representation of fact, but must satisfy themselves by inspection or otherwise as to their accuracy. No person in this firm's employment has the authority to make or give any representation or warranty in respect of the property.