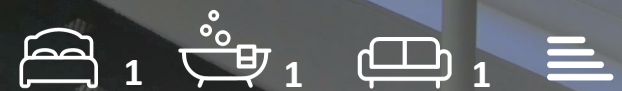




528A Christchurch Road
, Bournemouth, BH1 4BE

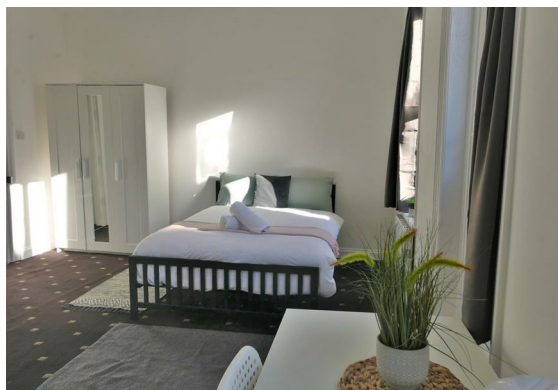
£1,250 Per month

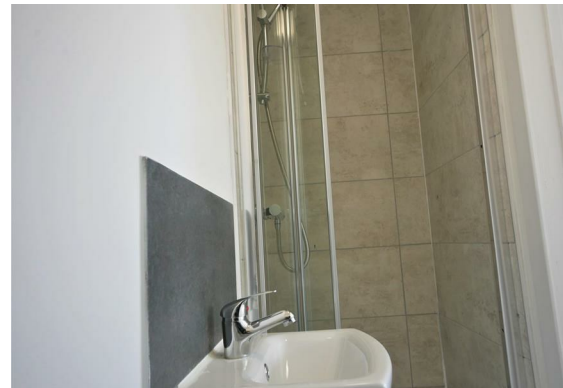


528A Christchurch Road

, Bournemouth, BH1 4BE

We are pleased to offer this studio flat to let in the Boscombe area of Bournemouth. The property is located within a walking distance to local shops and public transport. The studio flat has been newly renovated. The property comes fully furnished and all bills are included in the monthly rent. It is suitable for students or full-time workers. Please give us a call to arrange a viewing.





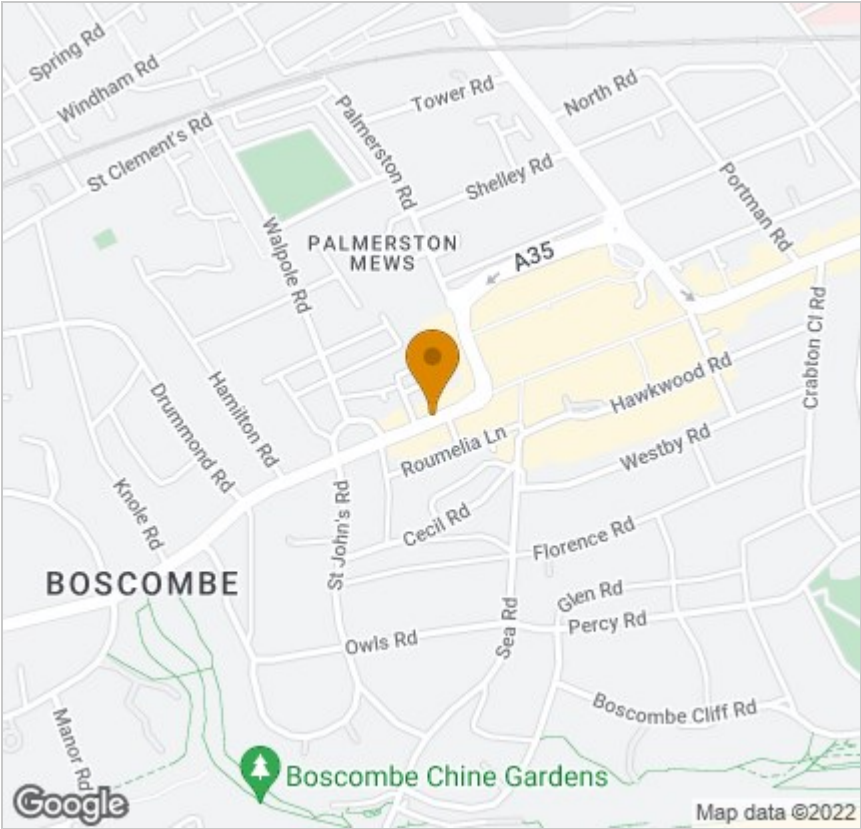
Floor Plan



Viewing

Please contact our HMO's Office on
if you wish to arrange a viewing appointment for this property or require further information.

Area Map



Energy Efficiency Graph



These particulars, whilst believed to be accurate are set out as a general outline only for guidance and do not constitute any part of an offer or contract. Intending purchasers should not rely on them as statements of representation of fact, but must satisfy themselves by inspection or otherwise as to their accuracy. No person in this firms employment has the authority to make or give any representation or warranty in respect of the property.