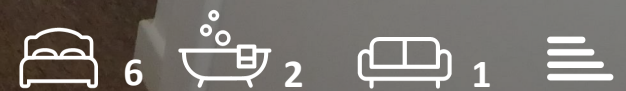




Flat 2 Stirling Court, 28 Manor Road
, Bournemouth, BH1 3EZ

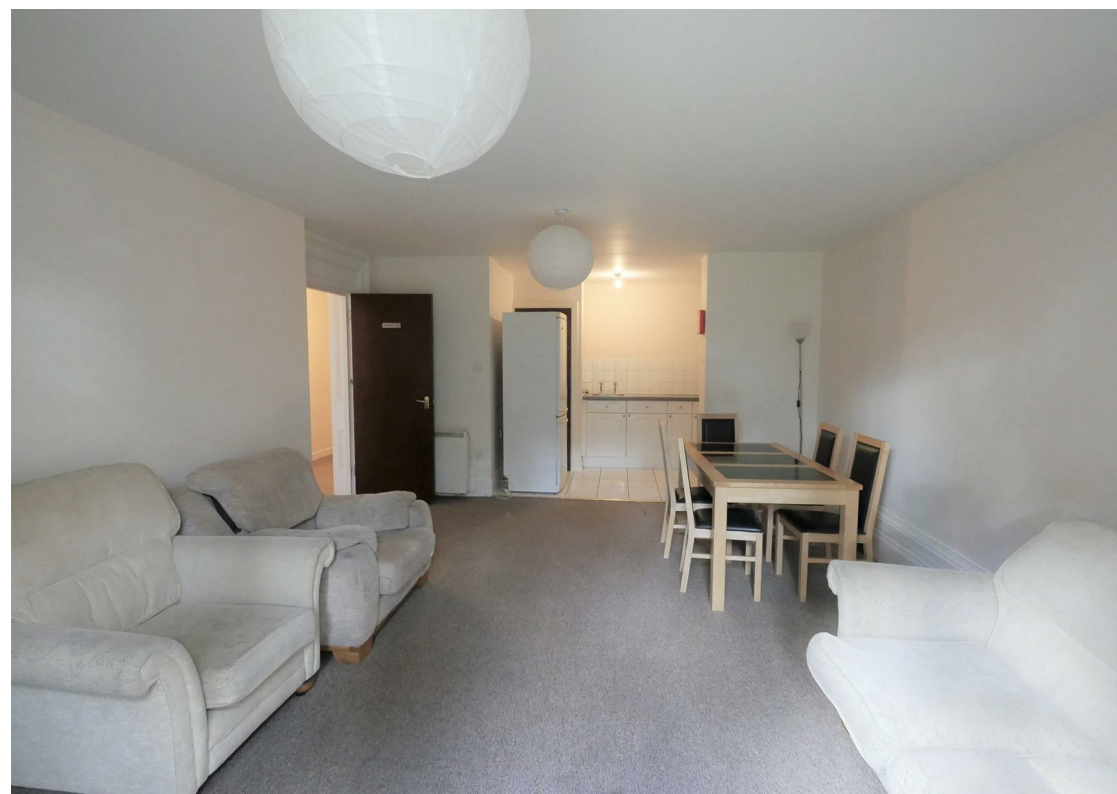
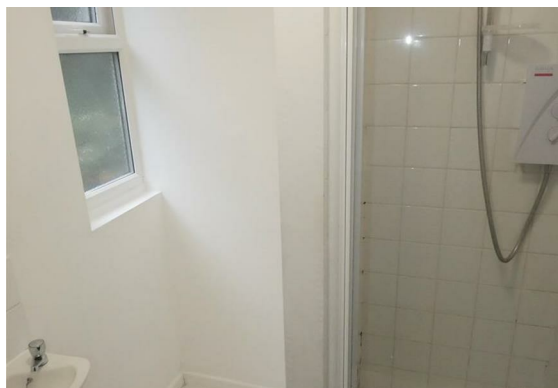
£650 Per month



Flat 2 Stirling Court, 28 Manor

, Bournemouth, BH1 3EZ

We are pleased to offer this en-suite double room to let in the Boscombe area of Bournemouth. The property is located within a short walking distance to the beach, local shops, and direct public transport to Bournemouth town centre. The property comes fully furnished and all bills are included in the monthly rent. There is complimentary Wifi at the property. Shared kitchen and laundry facilities are available at the property. It is suitable for students or full-time workers. Please give us a call to arrange a viewing.





Floor Plan



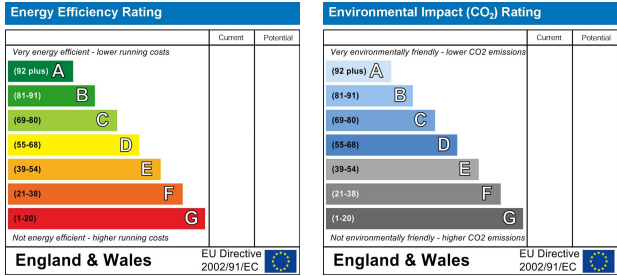
Viewing

Please contact our HMO's Office on
if you wish to arrange a viewing appointment for this property or require further information.

Area Map



Energy Efficiency Graph



These particulars, whilst believed to be accurate are set out as a general outline only for guidance and do not constitute any part of an offer or contract. Intending purchasers should not rely on them as statements of representation of fact, but must satisfy themselves by inspection or otherwise as to their accuracy. No person in this firms employment has the authority to make or give any representation or warranty in respect of the property.